

# What to recycle?

By Esther D'Mello

# Blue Bins= Clear bags



 **Recyclables Only** 

- paper
- cardboard
- metal cans
- plastic bottles
- glass bottles & jars

NO: Styrofoam, paper towels, napkins, food waste, snack wrappers, trash, etc.

[www.howardcountyclerycles.org](http://www.howardcountyclerycles.org) 410-313-6444



## Other recycling at school



--Batteries



--Ink cartridges



-- Cell phones

**Where? In Mail  
and Copy Center**



# Trash= black bags

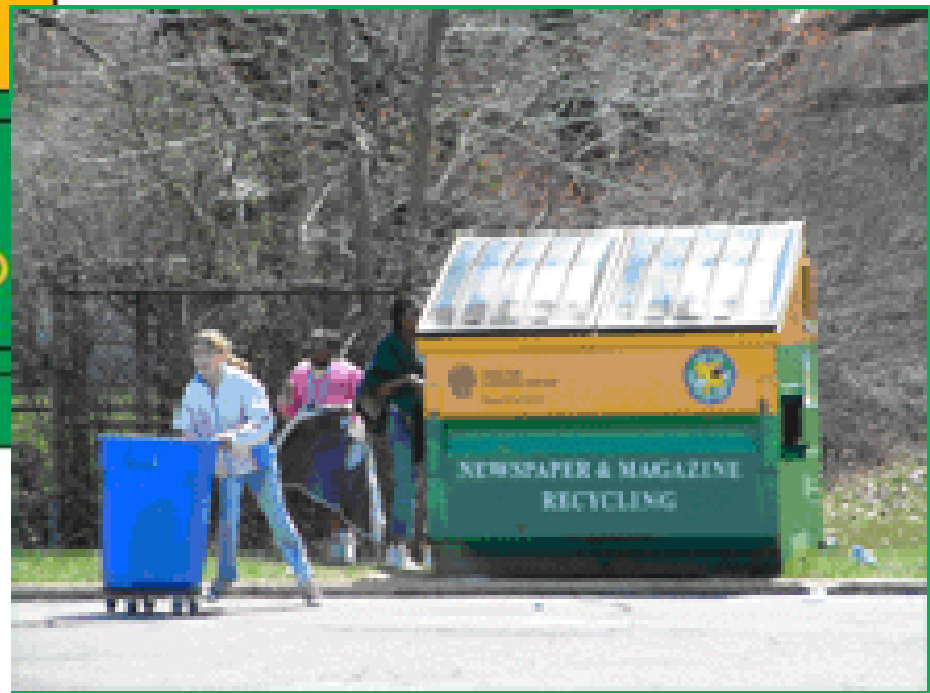


- Food
- Used food containers (coffee cups, bowls, juice boxes, etc.)—anything that has food/drink contamination!
- Plastic bags
- Plastic Wrap
- Styrofoam



# Future recycling plans

- On-Campus recycling dumpsters!



# Join us on Facebook

- EIG + Recycling Committee
- See what's new/ cool
- Make new friends
- Get connected!
- GO GREEN