

Academic Metrics Data

Robert Todd Bruce (Summer 2019)

sites.jcu.edu/institutionaleffectiveness

Background

First, let's get a basic sense of what's part of this project.

- Site: Academic Analytics
- Project: Academic Metrics (Chairs/Administrators)
- Workbooks:

First, let's get a basic sense of what's part of this project!

	Metrics	Graphics	Data Tables
Courses	1 Key Academic Metrics	3 Key Academic Metrics Graphics	6 Key Academic Metrics Data Tables
Faculty	2 Faculty Lines	2 Faculty Lines**	2 Faculty Lines
Graduating Majors and Minors		4 Majors at Graduation Graphics	7 Majors at Graduation Data Tables
Current Majors		5 Majors at End of Spring Term Graphics	8 Majors at End of Spring Term Data Tables

****2 Faculty Lines** includes graphics comparing faculty numbers to credit hours from **1/3/6** and majors from **4/7** and **5/8**

“We still need stable, pre-selected dashboards for people, where the most pertinent data is located in one place and which should not require clicking on and off various settings for each screen.”

	Metrics	Graphics	Data Tables
Courses	1 Key Academic Metrics	4 Key Academic Metrics Graphics	6 Key Academic Metrics Data Tables
Faculty	2 Faculty Lines: Trends & Comparisons	1 Faculty Lines**	2 Faculty Lines
Graduating Majors and Minors		4 Majors at Graduation Graphics	7 Majors at Graduation Data Tables
Current Majors		5 Majors at End of Spring Term Graphics	8 Majors at End of Spring Term Data Tables

- Site: Academic Analytics
- Project: Academic Metrics (Chairs/Administrators)
- Workbook:

To start, let's dive all the way down into the weeds to the heart of it all: the courses data table!

	Metrics	Graphics	Data Tables
Courses	1 Key Academic Metrics	3 Key Academic Metrics Graphics	6 Key Academic Metrics Data Tables
Faculty	2 Faculty Lines	2 Faculty Lines**	2 Faculty Lines
Graduating Majors and Minors		4 Majors at Graduation Graphics	7 Majors at Graduation Data Tables
Current Majors		5 Majors at End of Spring Term Graphics	8 Majors at End of Spring Term Data Tables

2 Faculty Lines includes graphics comparing faculty numbers to credit hours from **1/3/6** and majors from **4/7** and **5/8**

- View: Courses Data Table

The Data Table

+ a b | e a u
Academic Analytics
Content
Users
Groups
Schedules
Tasks
Status

Home > Academic Metrics (Chairs/Administrators) > 6 Key Academic Metrics Data Tables > Courses Data Tables
1

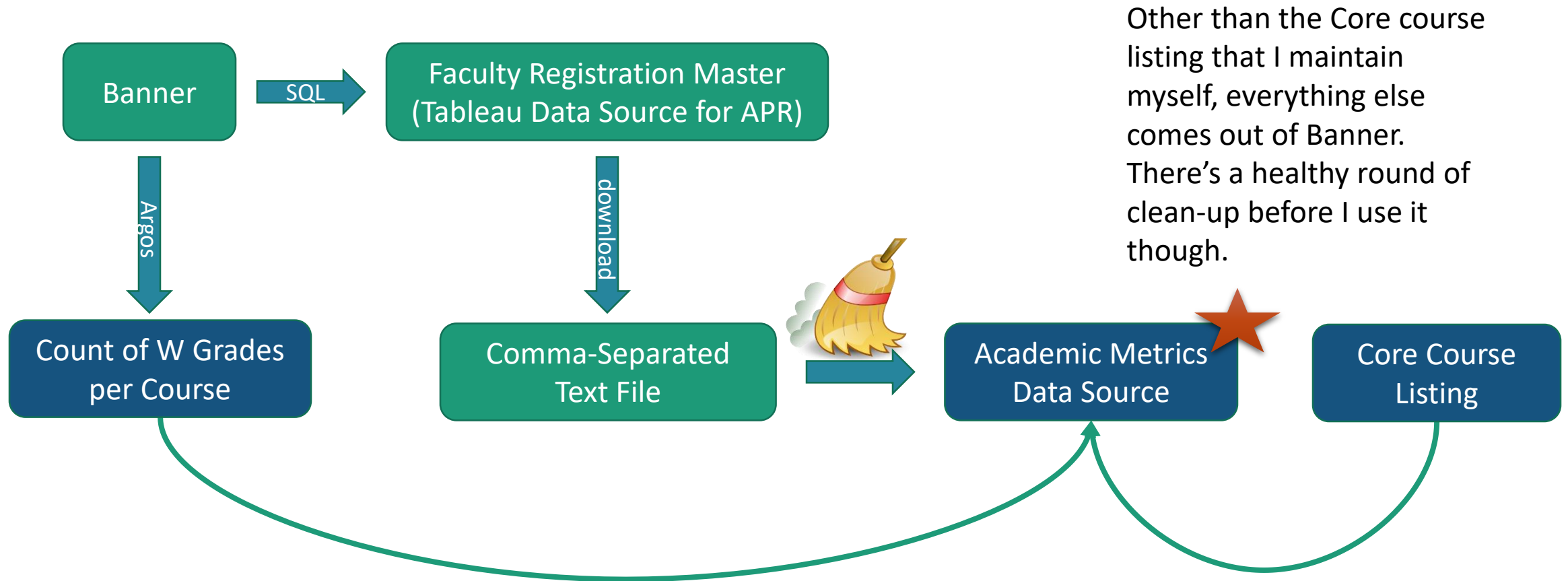
Undo
Redo
Revert
Refresh
Pause
View: Original
Alert
Subscribe
Edit
Share
Download
Comments
Full Screen

Data Table Instructions
Courses Data Tables
Instructor Data Tables
Instructor Data Details
Grad/Undergrad Breakout
Core Breakout

Courses Data Tables

Course College	Course Department	2004-2005					2005-2006					2006-2007					2007-2008	
		Distinct Courses	Total Sections	Total Enrollment	Student Credit Hours	Average Class Size	Distinct Courses	Total Sections	Total Enrollment	Student Credit Hours	Average Class Size	Distinct Courses	Total Sections	Total Enrollment	Student Credit Hours	Average Class Size	Distinct Courses	Total Sections
Arts & Sciences	Art History & Humanities	9	26	596	1,788	23	11	27	636	1,908	24	12	30	699	2,097	23	12	29
	Arts & Sciences																	
	Biology	50	95	2,111	4,058	22	45	97	1,937	3,959	20	48	94	1,771	3,762	19	47	98
	Chemistry	33	75	1,595	3,316	21	28	70	1,471	3,011	21	31	70	1,450	3,080	21	28	72
	Classical & Modern Languages	67	136	2,114	5,948	16	71	145	2,298	6,523	16	76	148	2,221	6,371	15	82	161
	Communication and Theatre	56	134	2,795	7,143	21	60	134	2,596	6,594	19	61	128	2,498	6,333	20	57	129
	Counseling (M.A.)	9	18	225	675	13	9	18	227	681	13	9	18	237	711	13	9	18
	Education & School Psychology	60	149	2,009	5,534	13	64	132	1,649	4,618	12	65	120	1,410	3,924	12	59	123
	English	53	147	2,952	8,650	20	53	144	2,949	8,662	20	57	141	2,787	8,084	20	53	144
	Exercise Science & Sports Studies	22	27	419	994	16	21	31	536	1,081	17	19	23	504	1,138	22	19	21
	History	48	69	1,438	3,765	21	45	69	1,493	4,128	22	45	67	1,340	3,573	20	49	73
	Humanities (M.A.)	2	2	23	69	12	2	2	26	78	13	2	2	16	48	8	2	2
	Interdisciplinary Programs																	
	Mathematics & Computer Science	52	116	1,970	5,352	17	46	105	1,887	5,253	18	45	97	1,810	5,036	19	48	102
	Nonprofit Administration (M.A.)											2	2	48	144	24	5	5
	Philosophy	39	110	2,769	7,844	25	36	109	2,608	7,406	24	38	104	2,581	7,324	25	35	101
	Physics	32	54	877	1,767	16	33	54	896	1,889	17	29	47	776	1,615	17	28	50
	Political Science	27	51	1,159	3,247	23	26	48	1,216	3,416	25	30	54	1,213	3,374	22	23	46
	Psychology	32	92	1,918	5,063	21	33	100	2,049	5,316	20	34	96	2,031	5,249	21	37	96
	Sociology & Criminology	33	65	1,352	3,986	21	31	64	1,328	3,885	21	31	60	1,403	4,141	23	32	62
Theology & Religious Studies	36	87	1,827	5,249	21	42	82	1,897	5,691	23	42	85	1,898	5,694	22	36	84	
Boler College of Business	Accountancy	20	58	1,235	3,705	21	15	46	1,039	3,117	23	21	50	1,149	3,447	23	16	39
	Economics and Finance	29	87	2,232	6,293	26	32	86	2,207	6,270	26	32	89	2,021	6,063	23	33	88
	Interdisciplinary Programs																	
	Laboratory Administration (M.S.)																	
	Management, Marketing & Supply Chain Managing Business	51	109	2,589	7,647	24	47</											

Underlying Data: Where Do They Come From?



Underlying Data: How Are They Structured?

Count of W Grades per Course

Number of Students
Receiving a Grade of
W for Each Course
from Fall 2004
through Spring 2019

EN-125-52-201830 = 3

Academic Metrics Data Source

One row per instructor per course since Fall 2004
(summer courses excluded)

Instructor: ID, Name, Ethnicity, Gender, Department, College, Type/Status
Course: ID, Title, Subject, Number, Section, Department, College, Level,
Credit Hours, Course Type, Old Core Codes, Campus, Cross-List/Team-
Taught Coding

Enrollment: Actual (UG/PB/GR), Maximum, Projected, Student Credit Hours
Academic Year, Term, Part of Term, Start Date, Days, Times, Rooms

Core Course Listing

Full Course Codes
matched to Core
Categories:

EN-125-52-201830 =
Foundational Writing

The data will be updated each fall and spring after
the third-week census freeze of the student file.

The SQL does not pull students who received a W for the main data
source. They have been added back in with a special report.

Columns and Calculations

Distinct Courses	count of distinct subject/number combinations
Total Sections	count of distinct modified CRNs (cross-lists have same modified CRN)
Total Enrollments	headcount in each course at census (plus Ws)
Student Credit Hours	headcount at census x credit hours per course
Average Class Size	total enrollment ÷ total sections
Course Credit Hours	from Banner
Clock Hours	number of hours spent in class (based on meeting times)

Hierarchies (Expanding and Collapsing)

Courses

College > Department > Level >
Course > Section

When you first open the table it shows rows based on departments. Department is part of a greater hierarchy that can be expanded or collapses by clicking on the + and – squares. This is the hierarchy completely expanded.

Course College	Course Department	Course Level	Course	Course Section
Arts & Sciences	Psychology	100 Level	PS100	1
				51
				52
				53
				54
				55
			PS101	1
				2
				51
				52
				53
				54
				55
				56
				57
				58
				59
				60
				61
				62
				63
			PS150	1
				51
				52
			PS190	1
				1
				51
		200 Level	PS226	51
				51

Hierarchies

(Expanding and Collapsing)

Course Department	Course Level	Course	Course Section	Fall 2016				
				Distinct Courses	Total Sections	Total Enrollment	Student Credit Hours	Average Class Size
Philosophy	100 Level	PL101	51	1.00	1.00	24.00	72.00	24.00
			52	1.00	1.00	16.00	48.00	16.00
	200 Level	PL205	51	1.00	1.00	25.00	75.00	25.00
			51	1.00	1.00	28.00	84.00	28.00
			51	1.00	1.00	29.00	87.00	29.00
		PL209	52	1.00	1.00	29.00	87.00	29.00
			41	1.00	1.00	19.00	57.00	19.00
			51	1.00	1.00	28.00	84.00	28.00
			52	1.00	1.00	29.00	87.00	29.00
		PL210	21	1.00	1.00	4.00	12.00	4.00
			41	1.00	1.00	14.00	42.00	14.00
			51	1.00	1.00	27.00	81.00	27.00
		PL260	51	1.00	1.00	27.00	81.00	27.00
			52	1.00	1.00	27.00	81.00	27.00
		PL265	51	1.00	1.00	28.00	84.00	28.00
			52	1.00	1.00	28.00	84.00	28.00
		PL270	51	1.00	1.00	28.00	84.00	28.00
			52	1.00	1.00	28.00	84.00	28.00
		PL275	51	1.00	1.00	26.00	78.00	26.00
		PL280	51	1.00	1.00	28.00	84.00	28.00
			52	1.00	1.00	28.00	84.00	28.00
		PL285	21	1.00	1.00	6.00	18.00	6.00
		PL286	51	1.00	1.00	28.00	84.00	28.00
		PL299	51	1.00	1.00	13.00	39.00	13.00

The next several slides show the effects on the metrics of collapsing the hierarchy.

Hierarchies

(Expanding and Collapsing)

Course Department	Course Level	Course	Course Section	Fall 2016				
				Distinct Courses	Total Sections	Total Enrollment	Student Credit Hours	Average Class Size
Philosophy	100 Level	PL101	51	1.00	1.00	24.00	72.00	24.00
			52	1.00	1.00	16.00	48.00	16.00
	200 Level	PL205	51	1.00	1.00	25.00	75.00	25.00
			51	1.00	1.00	28.00	84.00	28.00
		PL209	51	1.00	1.00	29.00	87.00	29.00
			52	1.00	1.00	29.00	87.00	29.00
		PL210	41	1.00	1.00	19.00	57.00	19.00
			51	1.00	1.00	28.00	84.00	28.00
			52	1.00	1.00	29.00	87.00	29.00
		PL230	21	1.00	1.00	4.00	12.00	4.00
		PL240	41	1.00	1.00	14.00	42.00	14.00
			51	1.00	1.00	27.00	81.00	27.00
		PL260	51	1.00	1.00	27.00	81.00	27.00
			52	1.00	1.00	27.00	81.00	27.00
		PL265	51	1.00	1.00	28.00	84.00	28.00
			52	1.00	1.00	28.00	84.00	28.00
		PL270	51	1.00	1.00	28.00	84.00	28.00
			52	1.00	1.00	28.00	84.00	28.00
		PL275	51	1.00	1.00	26.00	78.00	26.00
		PL280	51	1.00	1.00	28.00	84.00	28.00
			52	1.00	1.00	28.00	84.00	28.00
		PL285	21	1.00	1.00	6.00	18.00	6.00
		PL286	51	1.00	1.00	28.00	84.00	28.00
		PL299	51	1.00	1.00	13.00	39.00	13.00

Hierarchies

(Expanding and Collapsing)

Course Department	Course Level	Course	Fall 2016				
			Distinct Courses	Total Sections	Total Enrollment	Student Credit Hours	Average Class Size
Philosophy	100 Level	PL101	1.0	2.0	40.0	120.0	20.0
	200 Level	PL205	1.0	1.0	25.0	75.0	25.0
		PL208	1.0	1.0	28.0	84.0	28.0
		PL209	1.0	2.0	58.0	174.0	29.0
		PL210	1.0	3.0	76.0	228.0	25.3
		PL230	1.0	1.0	4.0	12.0	4.0
		PL240	1.0	2.0	41.0	123.0	20.5
		PL260	1.0	2.0	54.0	162.0	27.0
		PL265	1.0	2.0	56.0	168.0	28.0
		PL270	1.0	2.0	56.0	168.0	28.0
		PL275	1.0	1.0	26.0	78.0	26.0
		PL280	1.0	2.0	56.0	168.0	28.0
		PL285	1.0	1.0	6.0	18.0	6.0
		PL286	1.0	1.0	28.0	84.0	28.0
		PL299	1.0	1.0	13.0	39.0	13.0

Hierarchies

(Expanding and Collapsing)

Course Department	Course Level	Course	Fall 2016				
			Distinct Courses	Total Sections	Total Enrollment	Student Credit Hours	Average Class Size
Philosophy	100 Level	PL101	1.0	2.0	40.0	120.0	20.0
	200 Level	PL205	1.0	1.0	25.0	75.0	25.0
		PL208	1.0	1.0	28.0	84.0	28.0
		PL209	1.0	2.0	58.0	174.0	29.0
		PL210	1.0	3.0	76.0	228.0	25.3
		PL230	1.0	1.0	4.0	12.0	4.0
		PL240	1.0	2.0	41.0	123.0	20.5
		PL260	1.0	2.0	54.0	162.0	27.0
		PL265	1.0	2.0	56.0	168.0	28.0
		PL270	1.0	2.0	56.0	168.0	28.0
		PL275	1.0	1.0	26.0	78.0	26.0
		PL280	1.0	2.0	56.0	168.0	28.0
		PL285	1.0	1.0	6.0	18.0	6.0
		PL286	1.0	1.0	28.0	84.0	28.0
		PL299	1.0	1.0	13.0	39.0	13.0

Hierarchies

(Expanding and Collapsing)

Course Department	Course Level	Fall 2016				
		Distinct Courses	Total Sections	Total Enrollment	Student Credit Hours	Average Class Size
Philosophy	100 Level	1	2	40	120	20
	200 Level	14	22	527	1,581	24
	300 Level	14	22	447	1,341	20
	400 Level	1	1	16	48	16

Hierarchies

(Expanding and Collapsing)

Course Department	Course Level	Fall 2016				
		Distinct Courses	Total Sections	Total Enrollment	Student Credit Hours	Average Class Size
Philosophy	100 Level	1	2	40	120	20
	200 Level	14	22	527	1,581	24
	300 Level	14	22	447	1,341	20
	400 Level	1	1	16	48	16

Hierarchies (Expanding and Collapsing)

Course Department	Fall 2016				
	Distinct Courses	Total Sections	Total Enrollment	Student Credit Hours	Average Class Size
Philosophy	30	47	1,030	3,090	22

Hierarchies (Expanding and Collapsing)

These are the hierarchies that appear in this workbook.

Courses

College > Department > Level > Course > Section

Subjects

Subject > Level > Course > Section

Instructors

College > Department > Instructor (> Course ID)

Time

Academic Year > Semester

Data Tables
6 Key Academic Metrics Data Tables
2 Faculty Lines
7 Majors at Graduation Data Tables
8 Majors at End of Spring Term Data Tables

Courses: basis for others

Courses by Subject: *Subject Hierarchy*

Interdisciplinary Courses: *Subject Hierarchy for Programs grouped into Interdisciplinary Programs “department”*

Instructor Data Table: *Instructor Hierarchy*

Grad/Undergrad Breakout: *Breaks down graduate, postbac, and undergraduate enrollment*

Core Breakout: *categorizes courses as Old Core, New Core, Both Cores, or Neither Core*

Here’s a quick rundown on the different views available in this workbook.

Notes on Filters

Which Subject?

Peripheral Subjects = AR, BI, BPD, CE, FA, FYS, HP, LP, MS, SI

Core Subjects = everything else

Course Types

“Standard;” Labs; Practica, Workshops, and Internships;
Activity/Experiential Courses; Art and Music; Individual Experiences;
Academic Advising; Travel, Cross-Registration, and Other)

Course/Instructor Division and Course/Instructor Department

Instructor type

Administrator represents those with faculty status only; University
Employee represents all others teaching who have staff positions at
the University

- Site: Academic Analytics
- Project: Academic Metrics (Chairs/Administrators)
- Workbook:

	Metrics	Graphics	Data Tables
Courses	1 Key Academic Metrics	3 Key Academic Metrics Graphics	6 Key Academic Metrics Data Tables
Faculty	2 Faculty Lines	2 Faculty Lines**	2 Faculty Lines
Graduating Majors and Minors		4 Majors at Graduation Graphics	7 Majors at Graduation Data Tables
Current Majors		5 Majors at End of Spring Term Graphics	8 Majors at End of Spring Term Data Tables

If you are interested in numbers of majors rather than students in particular courses, you'll want to take a look at these two.

Why “End of Spring Term”?

- While number of graduates is important, we need a better way to capture a sense of total number of majors.
- A small senior class might mask a department drowning because of a gigantic sophomore class.
- Total number of majors impacts chair workload, advising in the department, and class sizes for upper level and graduate courses.
- We could have sampled third week of fall, end of fall, third week of spring, or end of spring.
- End of spring seemed likely to capture the maximum number (as many declarations as possible and prior to graduation).

Majors: Underlying Data

At Graduation

taken from Argos report of all graduates since January 2005

ID, name, graduation date and term, degree awarded, majors, minors, and concentrations

At End of Spring Term

excerpted from end of spring term freeze of student data (2005 to present)

ID, term, level, program, degree, majors, minors

Two Versions of Each

one row per student: can show connections between multiple majors or major and minors

one row per student per major or minor: allows accurate count of all majors/minors regardless of status as major 3, minor 2, etc.

Majors: Views

- Number of Majors
- Number of Minors
- Number of Old-Style Concentrations (mini-minors)*
- Paired Majors by Major 1 and by Major 2
- Major-Minor Pairs by Major 1/Major 2/Minor 1/Minor 2
- First Concentration Within Majors
- Second Concentration Within Majors

Majors: Filters

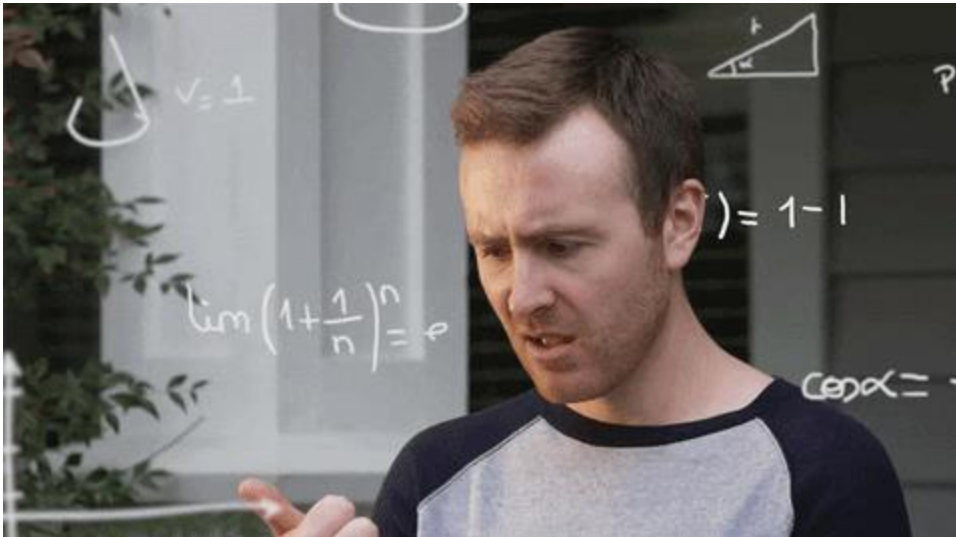
- Level: Graduate/Undergraduate
- Intended/Declared*
- Division and Department
- For Paired Charts, Filter by Key Field (Major1/Major2/Minor1/etc.)

***ONLY** in *End of Spring Term* Files

Majors

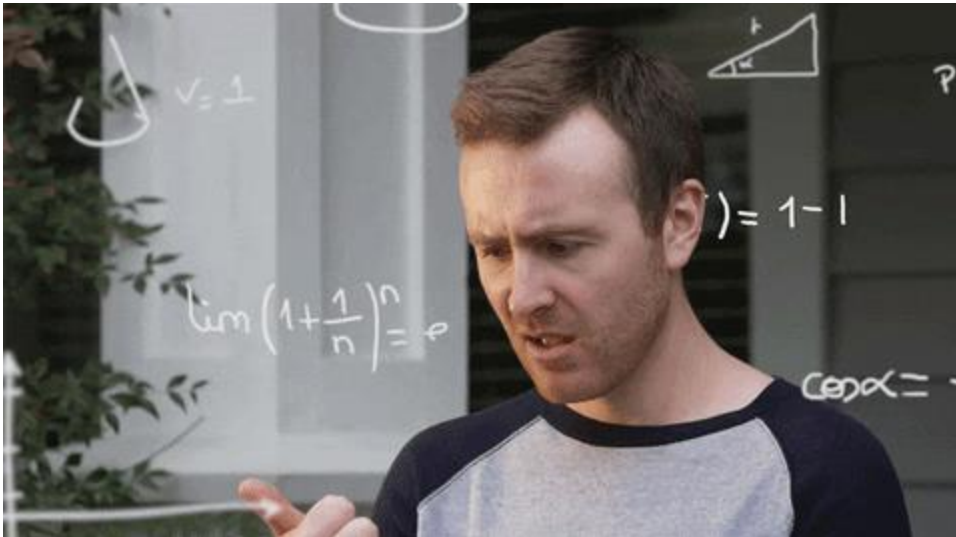
Hey! These numbers don't match
what's in my head!

What's going on?



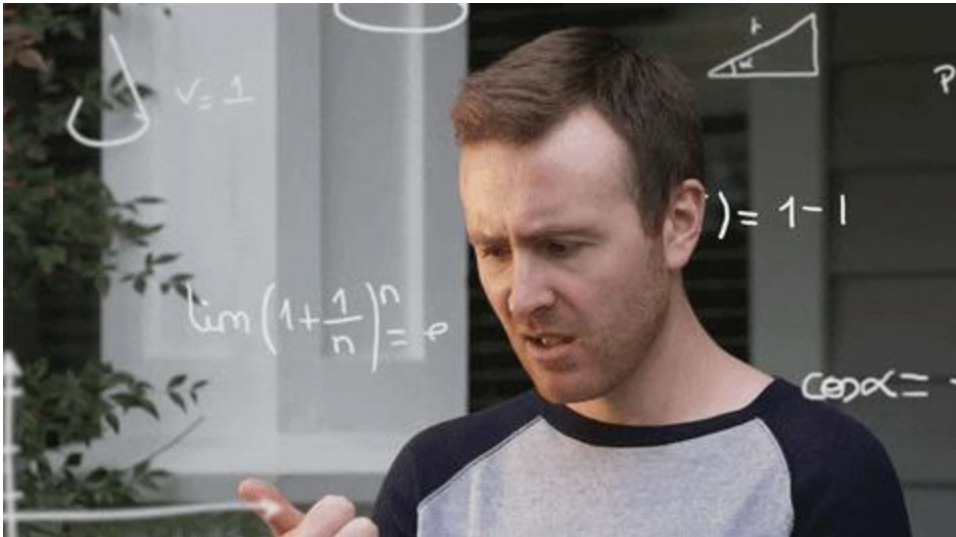
Majors

There are a number of reasons this might be happening.



- Graduation Dates: *not all of your seniors graduate at the same time, right?*
- Declaration Rules: *you know which first-year students are probably your majors but they aren't allowed to declare*
- Student Behavior: *students may "change their major" without doing so officially; they also chase after majors they can't enter*

Majors



- Graduation Dates
- Declaration Rules
- Declaration and Change Procedures
- Student Behavior
 - Declaration
 - Changing
 - Futile Pursuits

We can only present the data we have

- Site: Academic Analytics
- Project: Academic Metrics (Chairs/Administrators)
- Workbook:

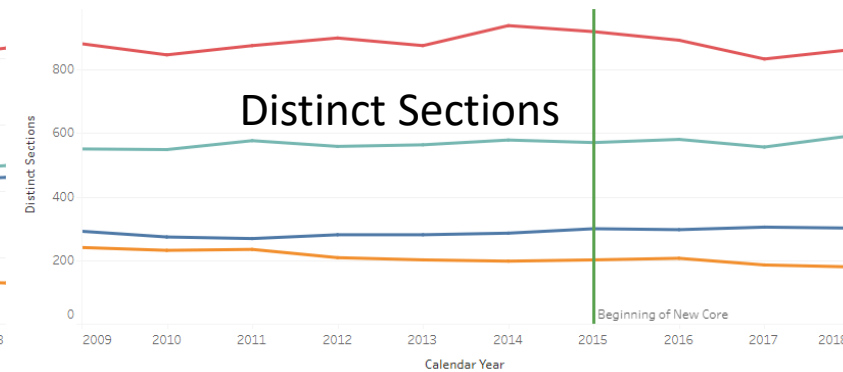
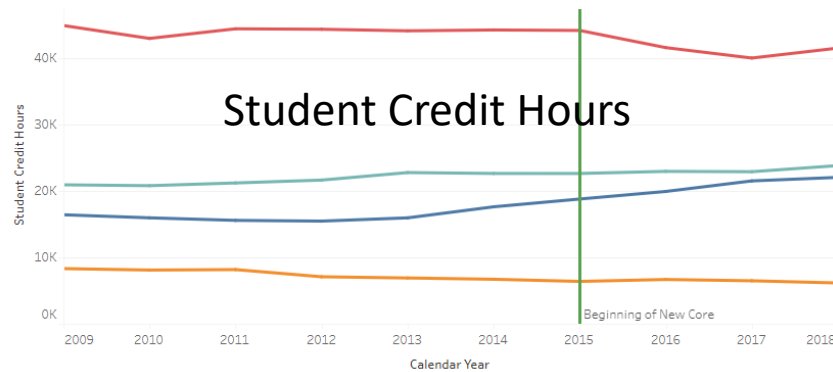
	Metrics	Graphics	Data Tables
Courses	1 Key Academic Metrics	3 Key Academic Metrics Graphics	6 Key Academic Metrics Data Tables
Faculty	2 Faculty Lines	2 Faculty Lines**	2 Faculty Lines
Graduating Majors and Minors		4 Majors at Graduation Graphics	7 Majors at Graduation Data Tables
Current Majors		5 Majors at End of Spring Term Graphics	8 Majors at End of Spring Term Data Tables

There are several workbooks that let you see some graphic visualizations of the data, particularly trends!

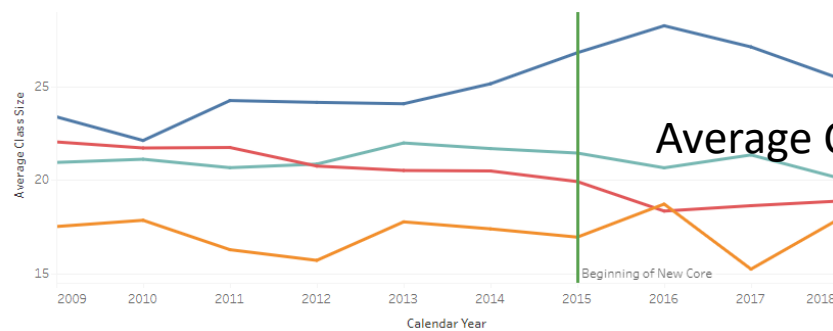
Graphics: Key Academic Metrics

Divisional/Departmental/Subject Comparisons

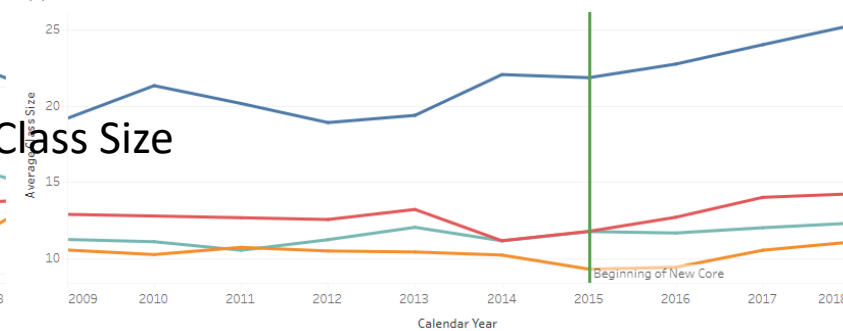
Divisional Comparisons



Lower-Division Courses

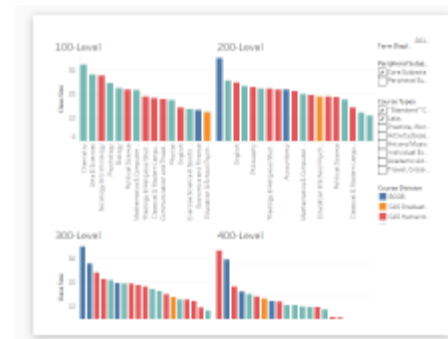
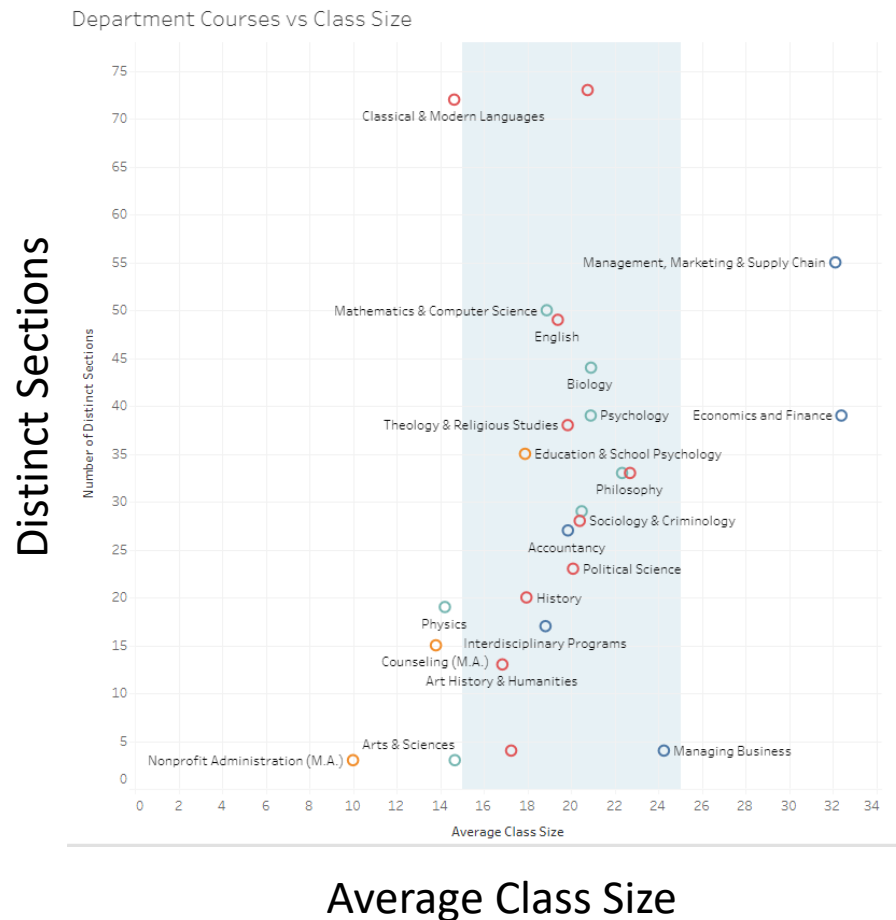


Upper-Division and Graduate Courses



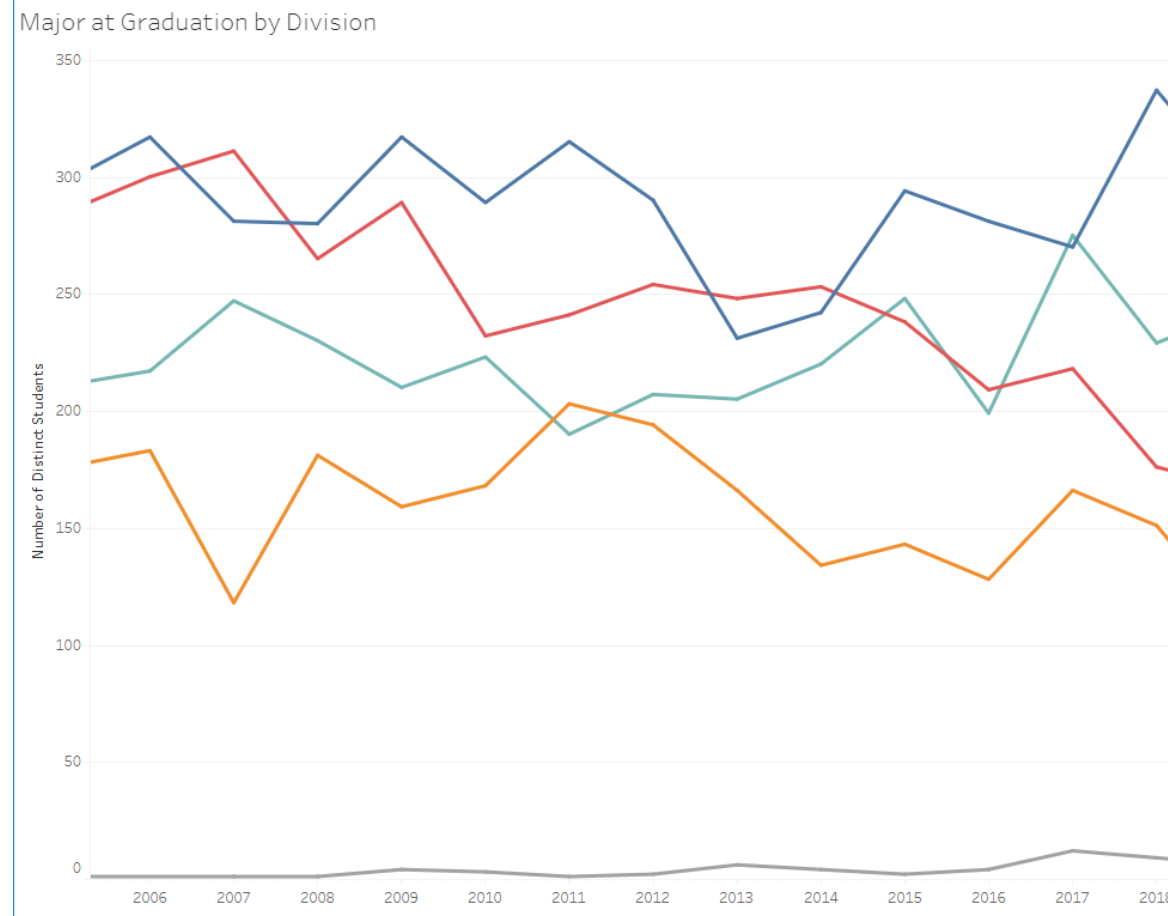
Graphics: Key Academic Metrics

Departmental and Instructor



Graphics: Majors

Trends over time by Division and within Divisions



- Site: Academic Analytics
- Project: Academic Metrics (Chairs/Administrators)
- Workbook:

	Metrics	Graphics	Data Tables
Courses	1 Key Academic Metrics	3 Key Academic Metrics Graphics	6 Key Academic Metrics Data Tables
Faculty	2 Faculty Lines	2 Faculty Lines**	2 Faculty Lines
Graduating Majors and Minors		4 Majors at Graduation Graphics	7 Majors at Graduation Data Tables
Current Majors		5 Majors at End of Spring Term Graphics	8 Majors at End of Spring Term Data Tables

2 Faculty Lines includes graphics comparing faculty numbers to credit hours from **1/3/6** and majors from **4/7** and **5/8**

While we were working on this, the President asked for a specific dashboard, comparing faculty lines to the other metrics. That's what this does.

Faculty Lines: Underlying Data

summary of official Provost's Office Faculty Listings since fall 2004

one row per term per department*

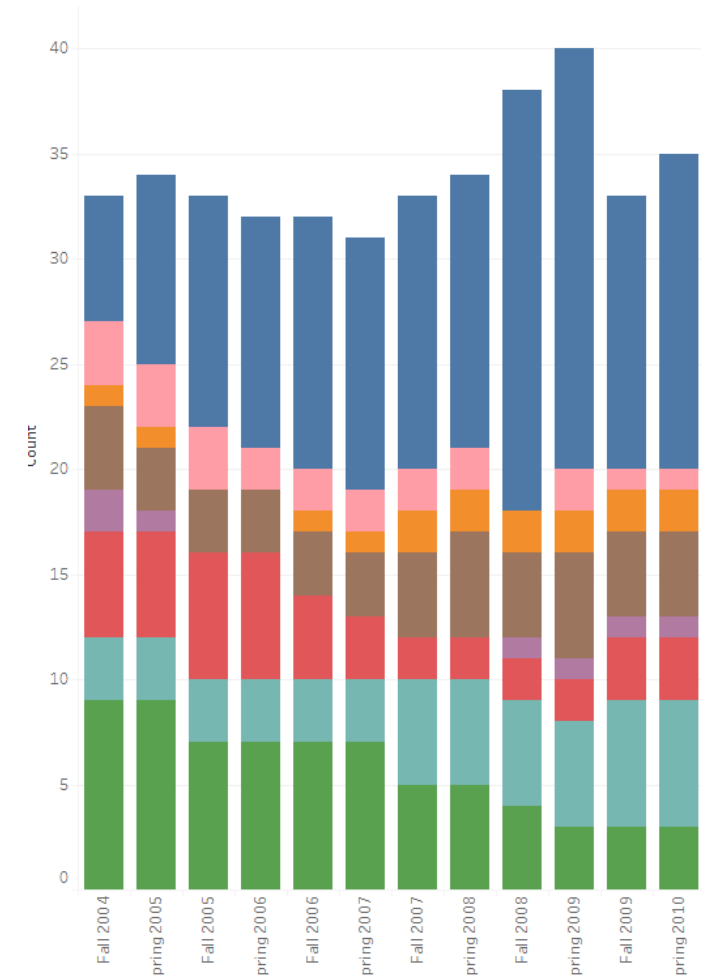
number of faculty in each category

- Visitors at any rank
- Professor (includes Senior Librarians)
- Associate Professor (includes Associate Librarians)
- Assistant Professor (includes Assistant Librarians)
- Administrators with Faculty Rank
- Graduate Assistants serving as instructors of record
- Part-Time Faculty
- all others included in listing

*part-time faculty hired for interdisciplinary programs or courses in AR, FA, and HP are also listed

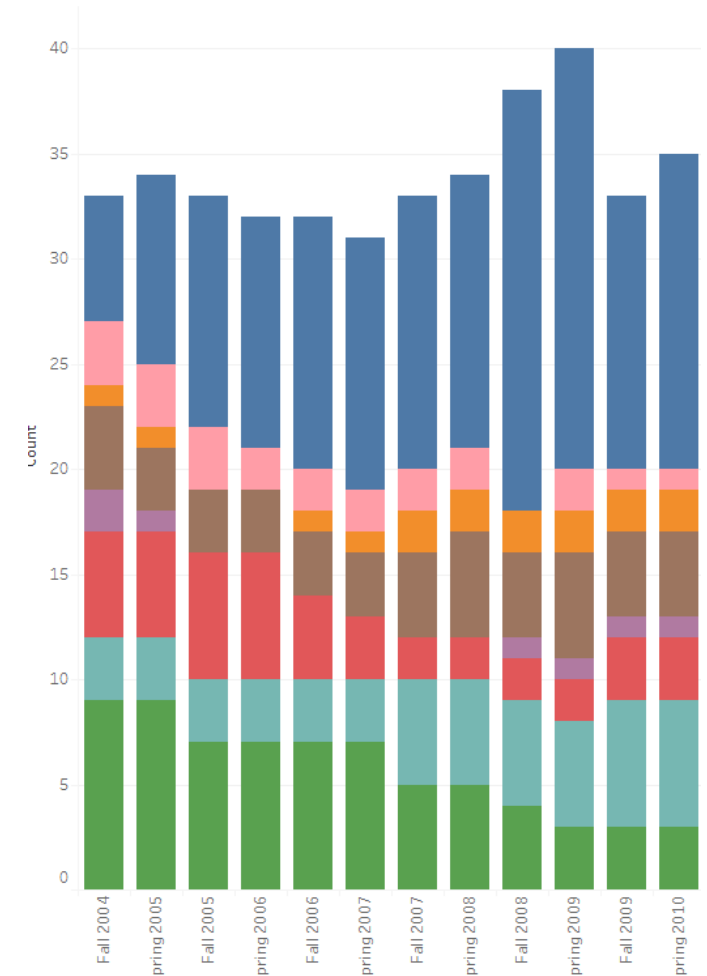
Faculty Lines: Data Table and Basic Graphics

- Data Table
 - Filter by Semester and Faculty Category
- Interactive Faculty Numbers
 - Select a Department and Filter by Category



Faculty Lines: Data Table and Basic Graphics

- Data Table
 - Filter by Semester and Faculty Category
- Interactive Faculty Numbers
 - Select a Department and Filter by Category
- Multiple Departments
 - Choose Departments and Filter by Category

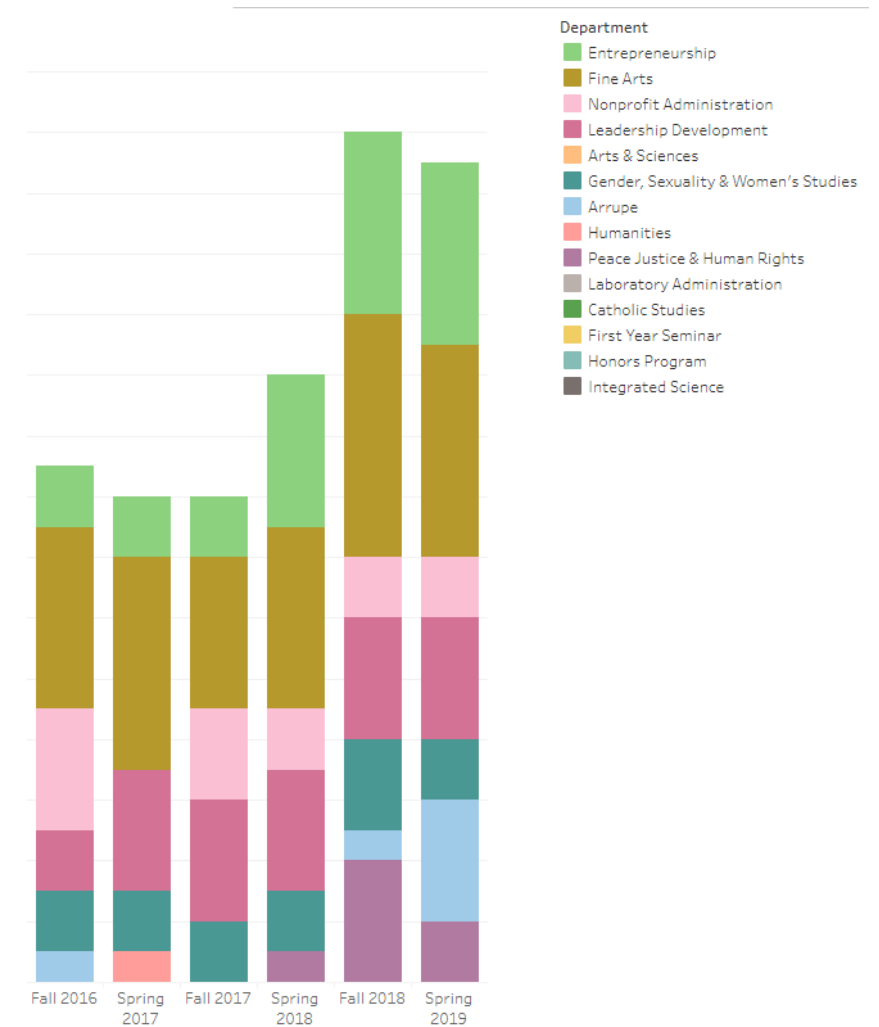


Faculty Lines: Data Table and Basic Graphics

- Data Table
 - Filter by Semester and Faculty Category
- Interactive Faculty Numbers
 - Select a Department and Filter by Category
- Multiple Departments
 - Choose Departments and Filter by Category
- Librarians
- Military Science Faculty

Faculty Lines: Data Table and Basic Graphics

- Data Table
 - Filter by Semester and Faculty Category
- Interactive Faculty Numbers
 - Select a Department and Filter by Category
- Multiple Departments
 - Choose Departments and Filter by Category
- Librarians
- Military Science Faculty
- Interdisciplinary Programs

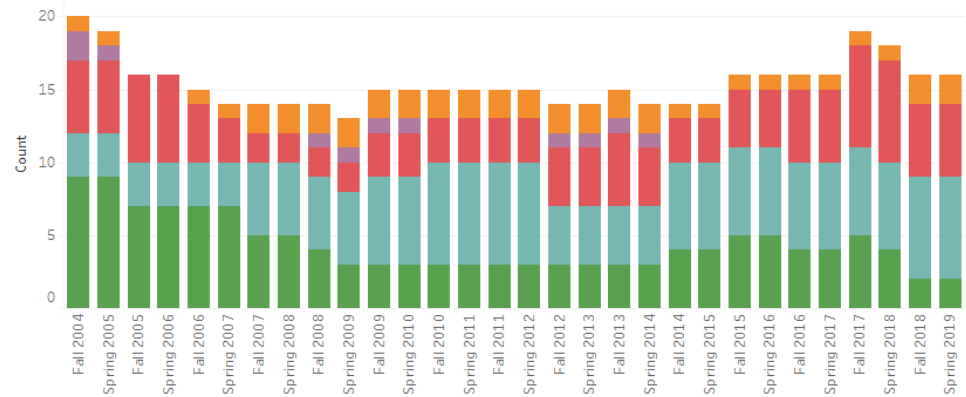


This is what we were asked to produce.

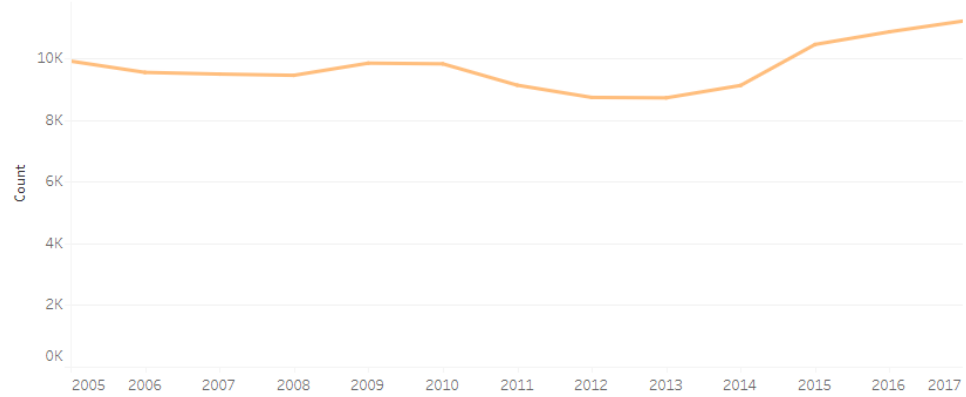
Faculty Lines: Faculty Trends & Comparisons

Choose a Department

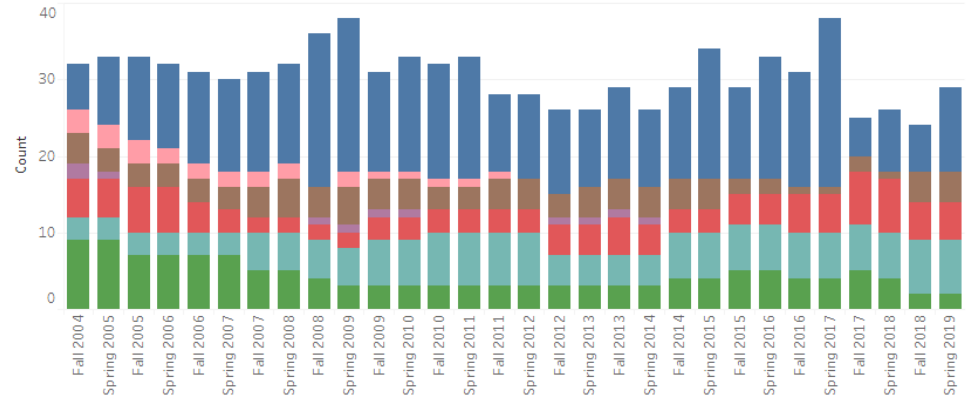
Faculty Lines



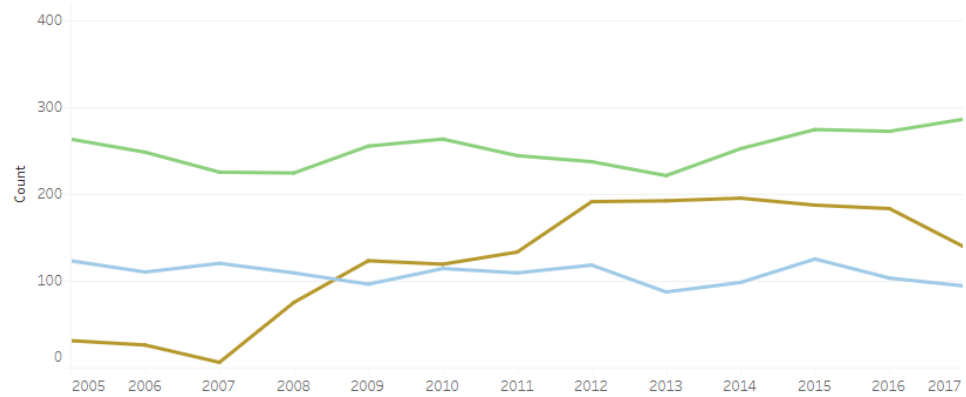
Attempted Student Credit Hours



Faculty in the Classroom

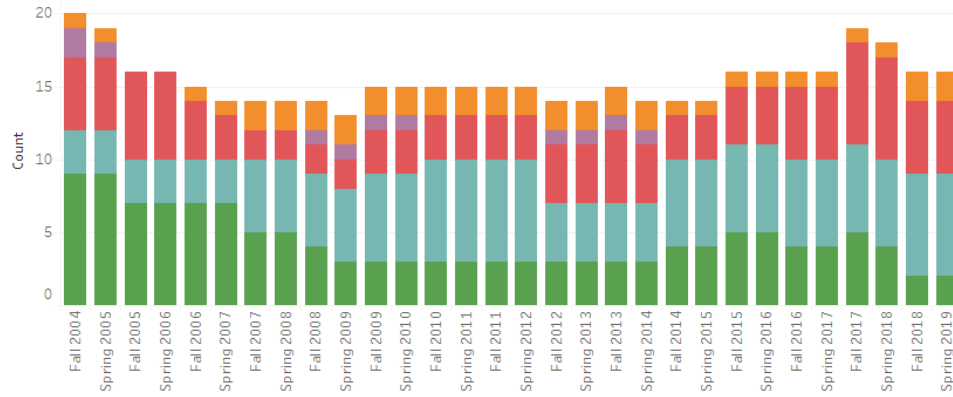


Student Trends

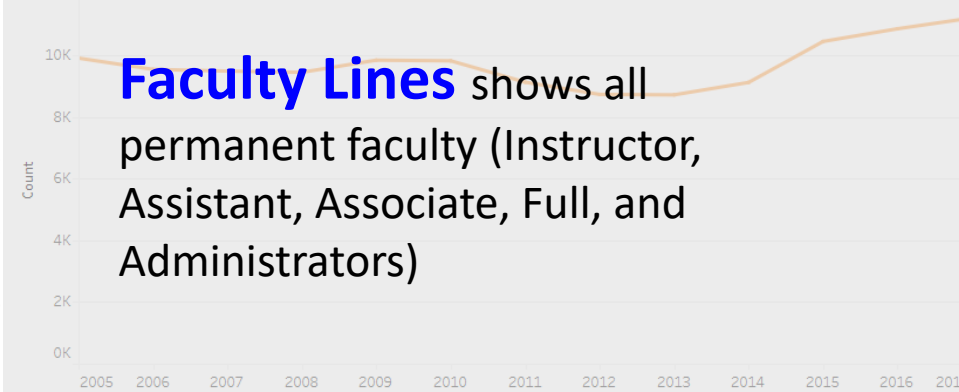


Faculty Lines: Faculty Trends & Comparisons

Faculty Lines

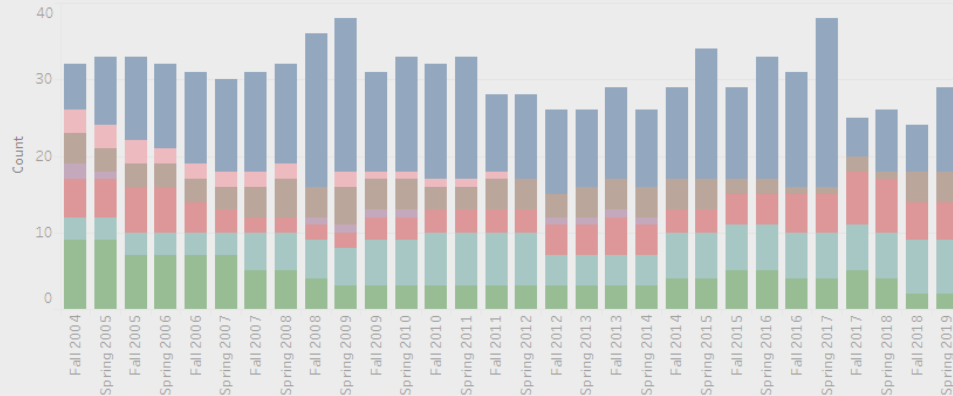


Attempted Student Credit Hours

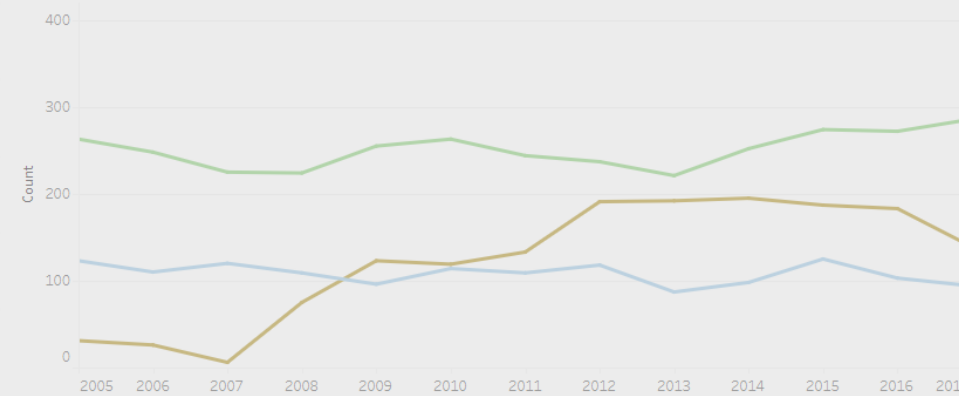


Faculty Lines shows all permanent faculty (Instructor, Assistant, Associate, Full, and Administrators)

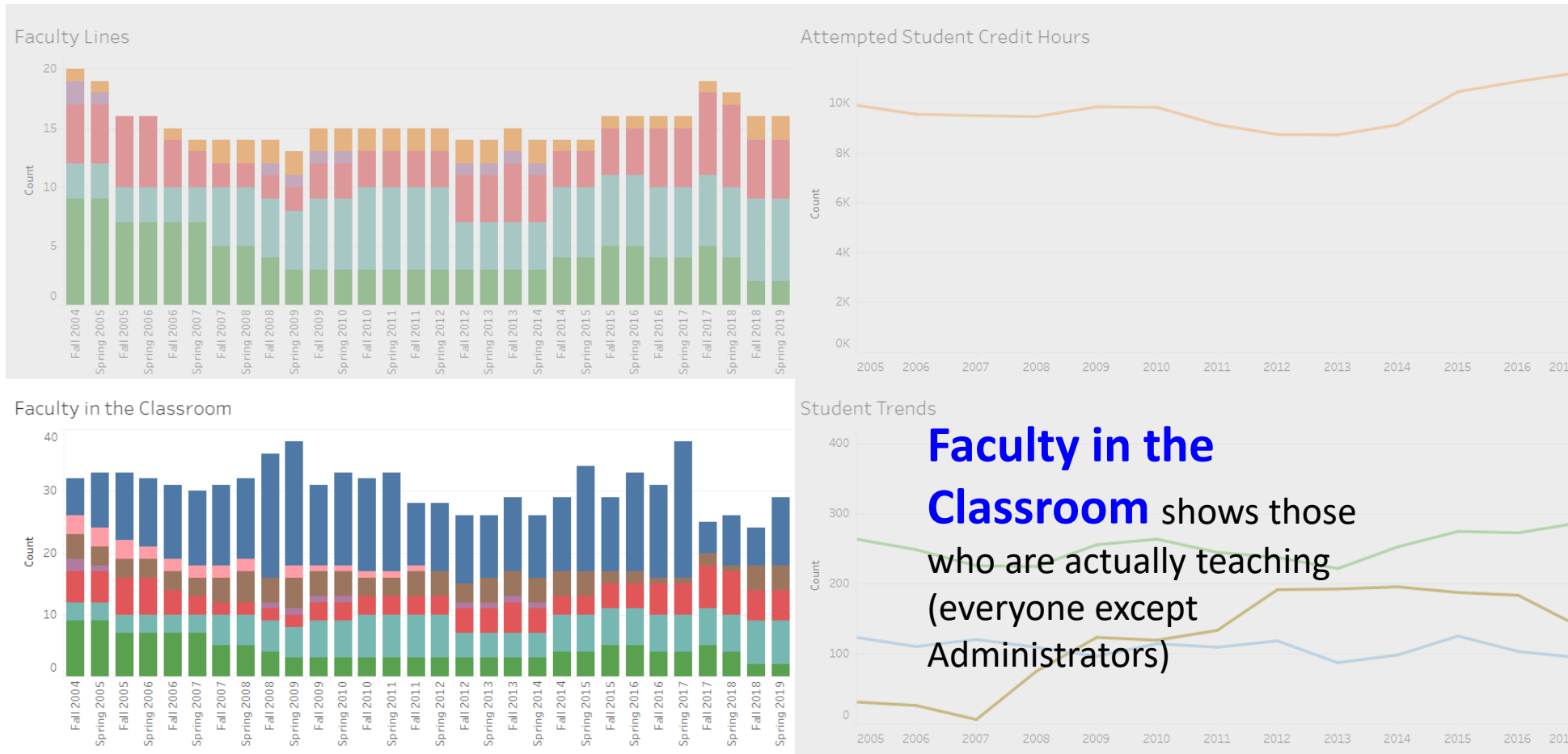
Faculty in the Classroom



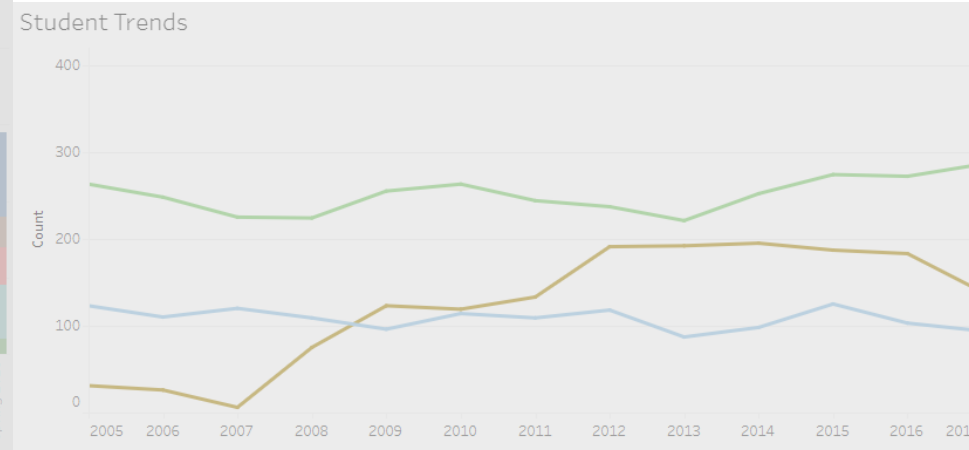
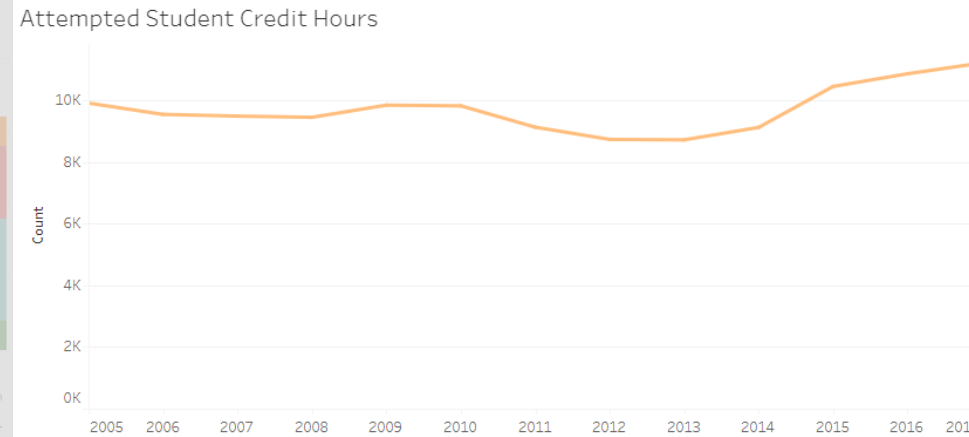
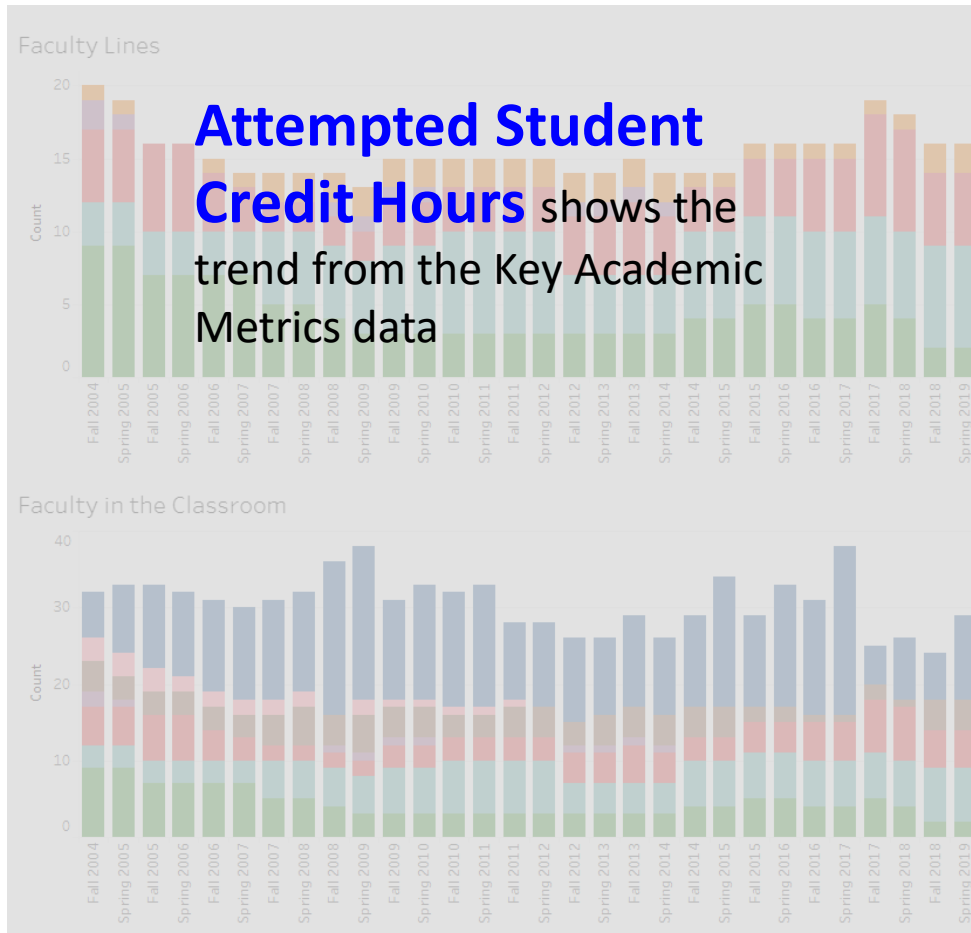
Student Trends



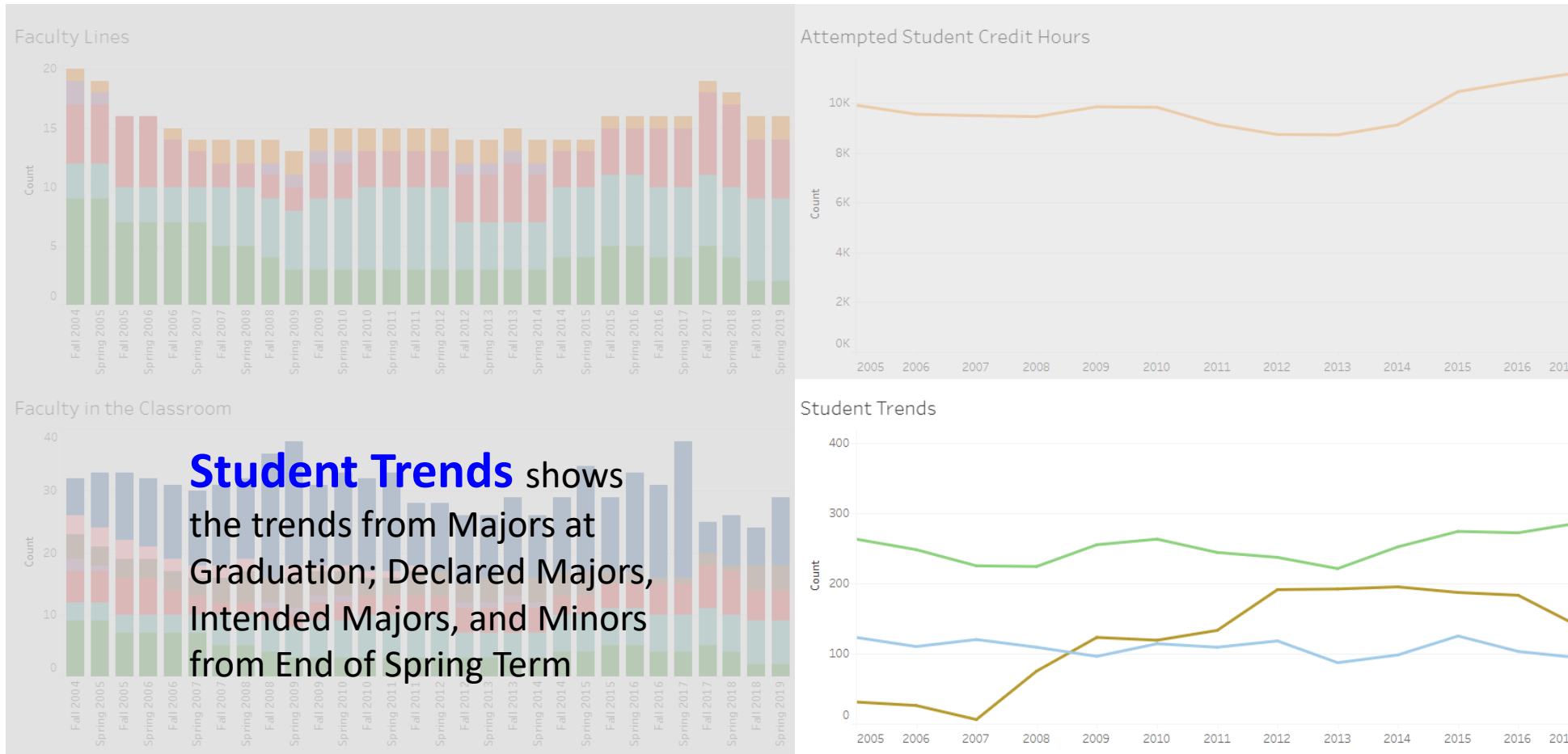
Faculty Lines: Faculty Trends & Comparisons



Faculty Lines: Faculty Trends & Comparisons



Faculty Lines: Faculty Trends & Comparisons



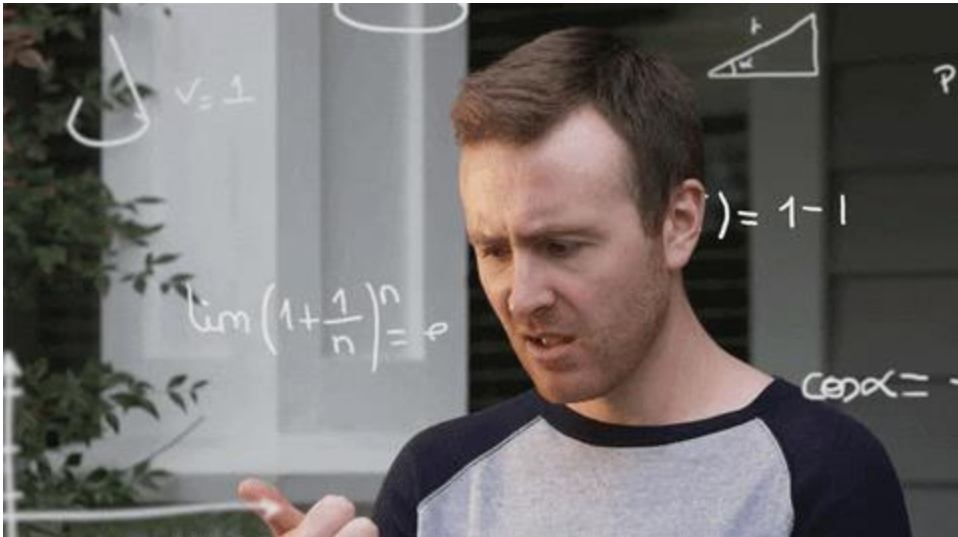
Note about Education, Counseling, and Exercise Science

- There are currently three departments that were once the Department of Education and Allied Studies. For the first couple of years following the split, there are inconsistencies in the various data sources.
- All faculty are included in Education & Allied Studies for Spring 2014 and prior semesters; current department names are used from Fall 2014 to present, regardless of actual configuration during that time.
- Not included in main Faculty Trends & Comparison dashboard; use Education & Allied Studies (through Spring 2014) or Education, Counseling, Exercise Science (since Fall 2014)

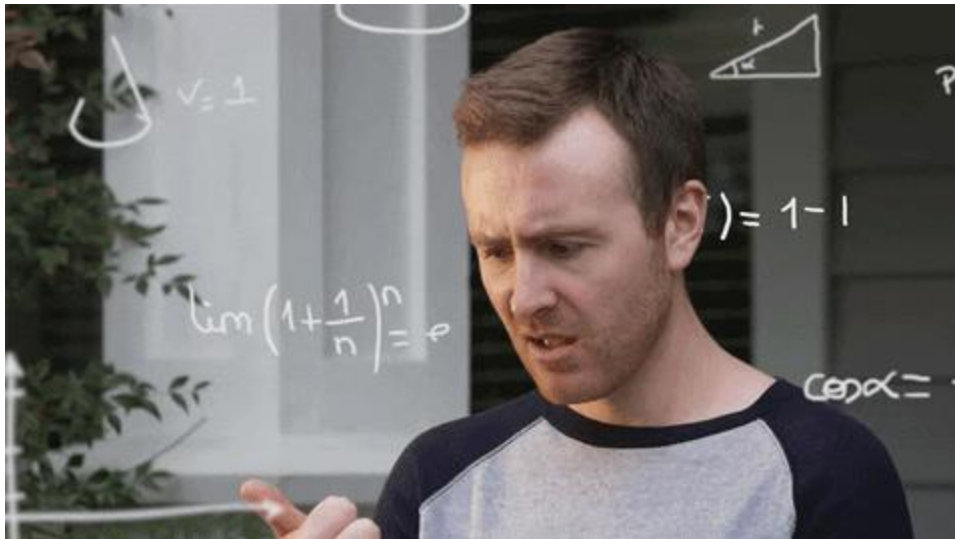
Faculty

Hey! These numbers don't match
what's in my head!

What's going on?



Faculty

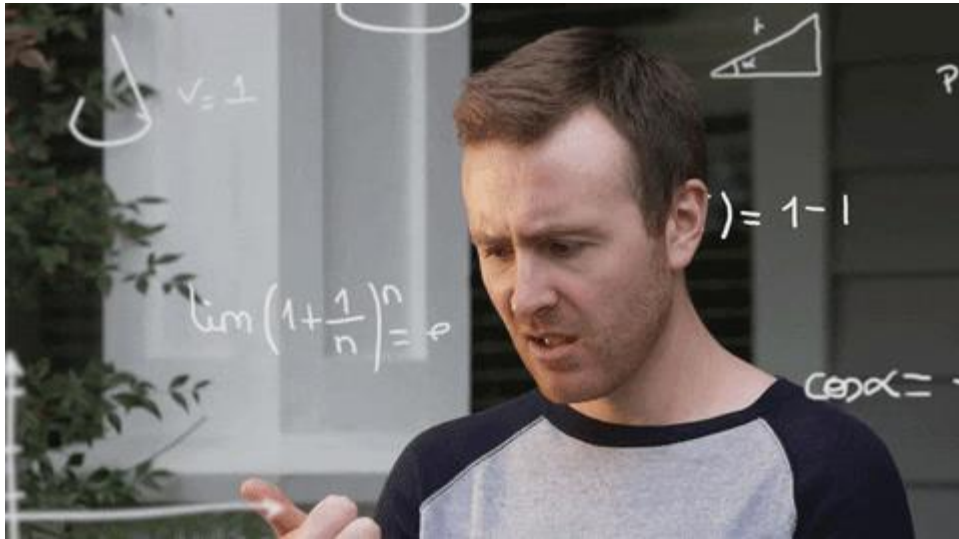


So, faculty data don't currently live in Banner. This is a literal snapshot of the official faculty records on my literal desk: the listing the Provost's office produces (each semester since 1977), the faculty list in the Bulletin, and the Book (which records tenure details). Everytime we need this data in a new way, we have to re-create it!

The image shows a large stack of spiral-bound faculty rosters for various departments. The rosters are organized by department and faculty member, with columns for names, positions, and contact information. The stack is thick, indicating a large number of faculty members across many departments.

Faculty

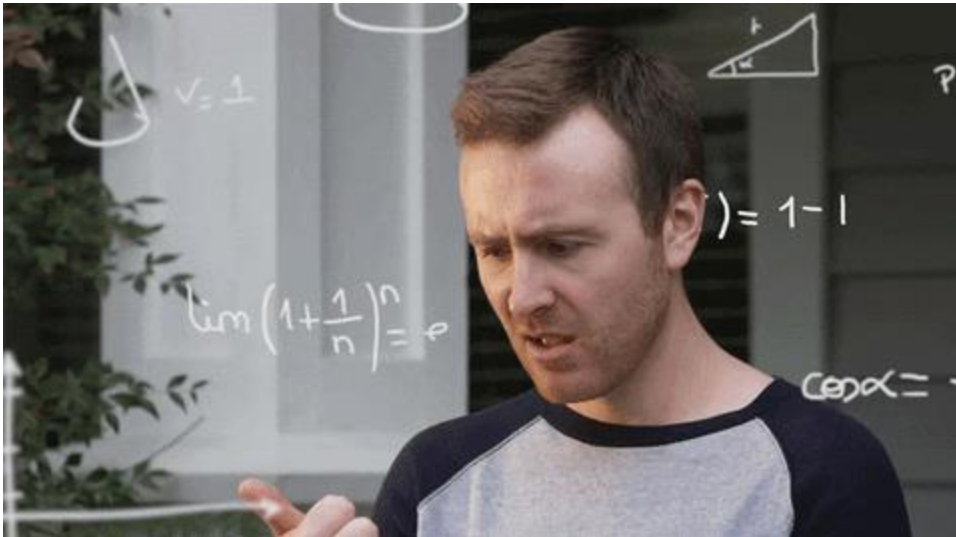
But there's also a decent number of folks generally thought of as faculty who aren't.



- Staff Who Teach
- “In Residence”
- Special Relationships

We can only present the data we have

Faculty



We can only present the data we have

Faculty Data is currently being migrated to Banner

1 Key Academic Metrics

- A Tableau dashboard that asks you to choose a department/subject and then scroll down through the three key metrics:
 - Student Credit Hours: total number of credit hours paid for by students during the last three academic years
 - Number of Distinct Sections: number of distinct sections offered in each term for the past three academic years
 - Average Class Size: the total enrollment of all sections in the department divided by the number of distinct sections

OK, back up to the top now. This dashboard answers the need for one place/no clicks.

1 Key Academic Metrics: Why These?

- To improve revenue, we obviously want to maximize Student Credit Hours
- Control of class size is crucial: It is not a good use of faculty resources to offer too many classes that are too small. Class sizes that balloon too large can jeopardize our value proposition to incoming students and negatively affect revenue in terms of retention.
- Including number of sections should help prohibit gaming of the class size metric.

1 Key Academic Metrics: Why These?

- Filters were chosen to be as fair as possible to faculty.
 - For Credit Hours, all courses are included.
 - For Class Size and Number of Sections, course types (like independent study) that are typically uncompensated are excluded.