

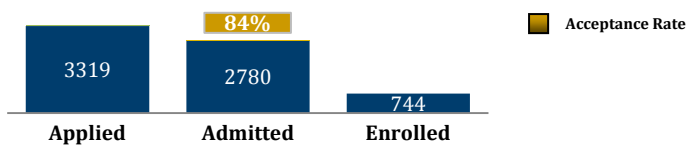
## John Carroll University

For 125 years, John Carroll University has focused on graduating students with intellect and character in the Jesuit tradition of educational excellence. Located in the beautiful, safe, Cleveland suburb of University Heights, our 64-acre campus is easy to navigate and offers state-of-the-art facilities. We offer 57 distinct majors, 51 minors and a wide array of other academic concentrations that enrich our students and add depth and flexibility to their studies. 33% of 2011 graduates graduated with more than one major. Admission is selective and focused on maintaining our excellent success rates for student retention and four-year graduation rates.

## Our Distinctions

- **John Carroll ranks #7 among universities that grant master's degrees in the U.S. Midwest;** 2012 marks the 23<sup>rd</sup> consecutive year that the University has been named in the top 10 institutions in this category (*U.S. News and World Report, 2012*)
- **#1 ranking in the "Schools with a Strong Commitment to Teaching" category** (*U.S. News and World Report, 2012*)
- **#4 ranking in the "Great Schools, Great Prices" category** (*U.S. News and World Report, 2012*)
- John Carroll holds a place on the list of "Programs to Look For," which recognizes John Carroll's focus on student success by providing compelling service-learning opportunities (*U.S. News and World Report, 2012*)
- **One of 153 colleges ranked as "Best in the Midwest"** (*Princeton Review*)
- **Boler School of Business holds dual AACSB accreditation** placing it in the top 11% of business programs worldwide
- University's **undergraduate accounting program is among the top 32** in the nation (*U.S. News and World Report, 2012*)
- **Ranked #6 among Masters Universities** (*Washington Monthly*)

## Our Class of 2015



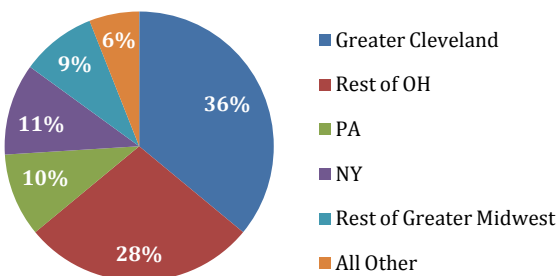
**Average High School GPA of Freshman Class: 3.4**  
21% ranked in top 10% of graduating class

**SAT Middle 50% Range**  
Critical Reading: 480 to 600  
Mathematics: 490 to 600  
Writing: 490 to 590

**ACT Middle 50% Range**  
Composite: 22 to 27 (24.7 average)

*Note: either SAT or ACT is accepted*

### Geographic Representation



25 states, Washington, D.C., and 5 countries represented

Male:Female Ratio	56:44
First Generation Students	13%
Legacy (JCU Alumni in Family)	29%
Graduates of Catholic High Schools	47%
Graduates of Jesuit High Schools	11%

### Race

*Multi-racial	2.4%
American Indian	< 1%
Asian	3.5%
Black	4.6%
Hispanic	3.5%
White	87%
No Response	4%

*\*Those who indicate multi-racial list more than one race, so percentages of all races will add up to greater than 100%.*

### Religion

Baptist	2%
Jewish	< 1%
Lutheran	1.2%
Methodist	2.7%
Muslim	1.3%
Orthodox Christian	1.1%
Protestant/NonDenom. Christian	2.2%
Roman Catholic	70%
Other	6.6%
No Response	12.5%

### Reasons for Choosing John Carroll\*

Academic Reputation	79%
Graduates Get Good Jobs	71%
Financial Assistance	69%
Campus Visit	55%
Size	52%

*\*Results from 2011 CIRP survey given to incoming freshmen*

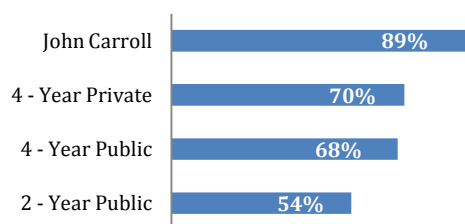
## Our Students

### Fall 2011 Enrollment

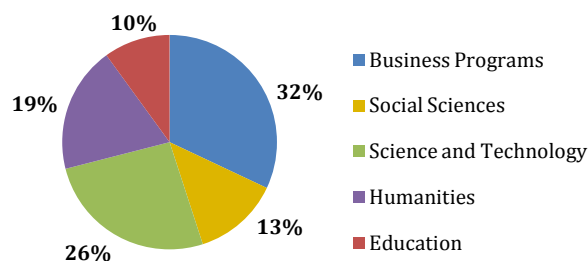
Undergraduate Full-time: 3,009

Graduate Students: 717

### Freshman Returning For Sophomore Year Rates:



### Areas of Study (Based on 2011 graduates)



**Most common majors:** Psychology, Communications, Marketing, Biology, Political Science, Education, Accounting, Management

## Our Graduates

### Percentage of JCU Students Who Graduate:

Within Four Years: 66%

Within Five Years: 73%

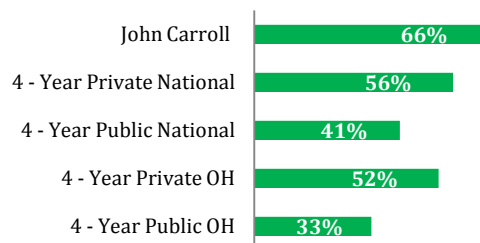
Within Six Years: 78%

*Note: graduation rate for students who began in 2005*

- JCU ranks 3rd in Midwest Region for graduation & retention rates
- Within six months of graduation, 99% of our students are either working full-time, in graduate school, or fulfilling a commitment to a year of service (5%)
- Median annual salary for newly employed full-time: \$35,000 - \$39,999
- Our graduates work in at least 24 states and 6 countries
- 500 companies in Northeast OH owned or operated by JCU alumni

*Career data compiled from survey respondents of Class of 2010 (www.jcu.edu/careercenter)*

### Four-Year Graduation Rates:



## Our Campus Life

### Residence Life

- Freshmen living on campus: 94%; total resident students: 1,752
- All entering students of traditional age not commuting from home are required to live on campus during their first two years.

### Involvement

- Nearly 100 recognized student organizations on campus.
- Most popular organizations include: Student Union, WJCU Radio, The Carroll News, national fraternities/sororities, academic clubs, and campus ministry.
- The Center for Service and Social Action coordinates service work within our local, national, and global communities.
- Costs for immersion trips are typically capped to ensure all students have the opportunity to participate.

### Athletics (Member of the Ohio Athletic Conference, NCAA Division III)

- Varsity Sports:** Baseball (M), Basketball (M/W), Cheerleading (W), Cross Country (M/W), Football (M), Golf (M/W), Indoor Track & Field (M/W), Outdoor Track & Field (M/W), Soccer (M/W), Softball (W), Swimming & Diving (M/W), Tennis (M/W), Volleyball (W), Wrestling (M)
- Club Sports:** Basketball (W), Field Hockey, Ice Hockey, Lacrosse (M/W), Rowing, Rugby, Sailing, Ultimate Frisbee, Volleyball (M/W)

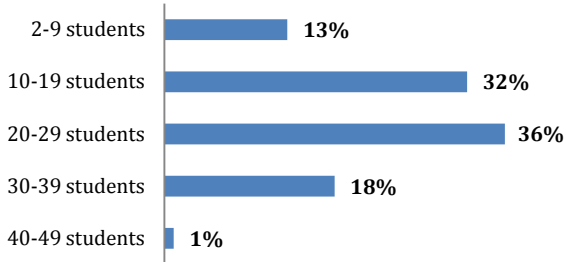
## Our City

- Cleveland is an ethnically diverse and culturally rich city.
- Playhouse Square - the country's largest performing arts center outside of New York City hosts over 1,000 Broadway shows, dance, comedy, musical concerts and special events annually.
- The Cleveland Orchestra - long regarded as one of the world's great orchestras, the Cleveland Orchestra performs at Severance Hall, which has maintained its acclaimed beauty and architectural integrity for years and is widely considered one of the world's most beautiful concert halls.
- Rock and Roll Hall of Fame - the single largest collection of rock and roll artifacts, cinema presentations and over 50 exhibits make the Rock Hall a must-see.
- Cleveland Museum of Art - one of the nation's most preeminent art museums, featuring 6,000 years of the world's great art as well as significant special exhibits.
- Cleveland Botanical Garden, with an exotic new Glasshouse - the only one of its kind in the world; 10 acres of beautiful gardens, including an award-winning children's garden.
- Cleveland Metroparks - more than 21,000 acres in 16 reservations surround Cleveland, like an "Emerald Necklace;" walking and hiking trails, eight outdoor education facilities, seven golf courses, four swimming areas, 70 picnic areas and twin refrigerated toboggan chutes offer opportunities for year-round fun.
- Very proud professional sports tradition - home of the major league Cleveland Browns (NFL), Cleveland Indians (MLB), Cleveland Cavaliers (NBA), and Cleveland Gladiators (AFL), as well as minor league Lake County Captains (baseball) and Lake Erie Monsters (hockey).

# Our Academic Environment

- Full-time Faculty: 189 (96% with highest degree in field); very few Graduate Assistants used to teach
- Faculty serve as Academic Advisors to undergraduates
- Student to faculty ratio is 15:1
- Classes are small and focused on discussion rather than lecture format
- Unique First Year Seminar program serves as an introduction to critical thinking and approach to college academic life
- Study abroad and immersion programs take many of our students around the globe for semester, summer, or alternate break trips

## Average Class size - % of Classes Taught



# Our Academic Programs

## Majors:

Accountancy	Education: Middle Childhood	Industrial / Organizational Psychology
Art History	Education: Multi-Age	Interdisciplinary Physics
Biochemistry	Engineering Physics	International Business with Language & Culture
Biology	English	Latin
Business Logistics	English: Literature	Management
Cell & Molecular Biology	English: World Literature	Marketing
Chemistry	English: Writing	Mathematics
Child & Family Studies (Psychology)	Environmental Science	Mental Health (Psychology)
Classical Languages	Exercise Science	Peace, Justice, & Human Rights
Classical Studies	Finance	Philosophy
Communication & Theatre Arts	Forensic Psychology	Physical Education
Computer Information Systems	French: French Studies	Physics
Computer Science	French: General	Political Science
Criminology (Sociology)	German	Psychology
Cultural Diversity (Sociology)	Greek	Self-Designed Major (Honors Program Only)
East Asian Studies	Healthcare Information Systems (Computer Science)	Sociology & Criminology
Economics	History	Spanish
Education: Adolescent/Young Adult	Human Service, Health, & Social Justice (Sociology)	Teaching Mathematics
Education: Early Childhood	Humanities	Theology & Religious Studies

## Minors:

Africana Studies	Entrepreneurship	Modern European Studies
Aging Studies	Environmental Studies	Neuroscience
Art History	Foreign Affairs	Peace, Justice, & Human Rights
Biochemistry & Molecular Biology	Forensic Behavioral Science	Perspectives on Sex & Gender
Biology	French	Philosophy
Business	German	Physical Education & Exercise Science
Catholic Studies	Greek	Physics
Chemistry	History	Political Communication
Classical Studies	Humanities	Political Science
Communication & Theatre Arts	International Economics & Modern Languages	Population & Public Health
Computer Information Systems	International Studies	Probability & Statistics
Computer Science	Italian Studies	Psychology
Creative Writing	Latin	Public Administration & Policy Studies
East Asian Studies	Latin American & Latino Studies	Sociology & Criminology
Economics	Leadership Development	Spanish
Engineering Physics	Mathematics	Theology & Religious Studies
English	Mathematics & Economics	United States Politics

# Our Application Process

(For incoming first-year students; details on the transfer student application process can be found at [www.jcu.edu/apply](http://www.jcu.edu/apply))

- 1) **Submit The Common Application** (JCU is a Common Application exclusive user and accepts only The Common Application) **using one of the following formats:**
  - a. Online version ([www.commonapp.org](http://www.commonapp.org)) with **JCU Supplement**
  - b. Paper version with **JCU Supplement**
- 2) **Have your high school send us your official documents:**
  - a. Transcript
  - b. Common Application School Report
  - c. Teacher evaluation/recommendation (optional)
- 3) **Send us your standardized test scores (if not on HS transcript)**
  - a. SAT – JCU School Code is **1342**
  - b. ACT – JCU School Code is **3282**

## Key Application and Notification Dates

**December 1** – Early Action I (Non-restrictive) and Priority Scholarship

→ Decisions released the 3<sup>rd</sup> week of December

**February 1** – Early Action II (Non-restrictive)

→ Decisions released weekly from mid-January through mid-February

**Post February 1** – Rolling admission on a space-available basis

## Our Affordability

### Costs for 2011-2012

Tuition.....	\$30,660
Room & Board.....	\$9,150
Fees:	
Student Activity Fee.....	\$400
Student Technology Fee.....	\$400
Student Health Service Fee.....	\$250
Orientation Fee (first-year only).....	\$325
<b>Total Resident Cost.....</b>	<b>\$40,860</b>

**Net Price Calculator:** <https://jcu.studentaidcalculator.com>

### Free Application for Federal Student Aid (FAFSA)

- **JCU federal code:** 003050
- **December:** parent and student should apply for a federal PIN (to electronically sign the FAFSA) at [www.pin.ed.gov](http://www.pin.ed.gov)
- **January 1 – February 15:** file the FAFSA at [www.fafsa.gov](http://www.fafsa.gov)

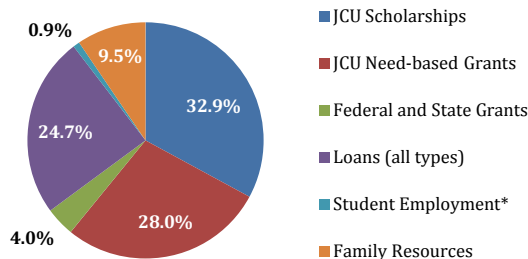
### Average Student Expenses (annually)

Books & Supplies.....	\$1,000
Transportation.....	\$800

### Scholarships (available to incoming first-year students; scholarships for transfer students can be found at [www.jcu.edu/aidjcu](http://www.jcu.edu/aidjcu))

- Apply for admission prior to December 1 to ensure full consideration for all scholarship opportunities.
- **University Scholarship** – all students automatically reviewed at time of application review for this academic award; \$5,000 to \$18,000
- **Presidential Honors Award** – students must apply separately (application online) to the Honors Program; can combine with other scholarships to reach maximum of \$24,000/year; typically 50-60 awarded per year
- **Arrupe Scholars Award** – students must apply separately (application online) to this service and social action program; can combine with other scholarships to reach maximum of \$22,500/year; typically 20 awarded per year
- **Leadership Scholars Award** – students must apply separately (application online) to this leadership program; can combine with other scholarships to reach maximum of \$22,500/year; typically 20 awarded per year
- **Scholarship application deadline for 3 flagship programs (Honors, Arrupe, and Leadership) is January 25, 2012**
- Other various awards available through the generosity of donors and alumni based on a variety of criteria.

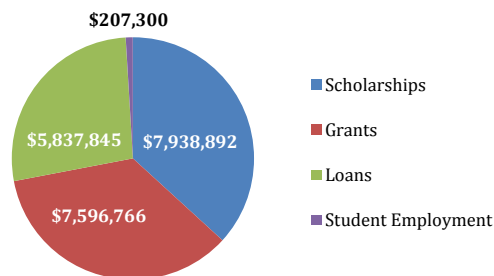
### How the Average Student in the Class of 2015 is Affording JCU



\*JCU employs nearly 800 students in jobs on and off campus.

### Class of 2015 Total Aid Commitment

(From All Sources)



### Student Borrowing

- Median loan balance of graduating seniors: \$24,786
- 75% of Class of 2011 borrowed some loans
- 52% borrowed less than \$25,000
- Student loan repayment/default rate: 0.9% (national average for the same time period is 8.8%)